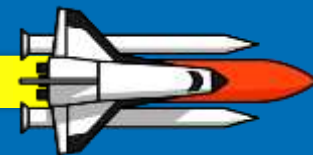


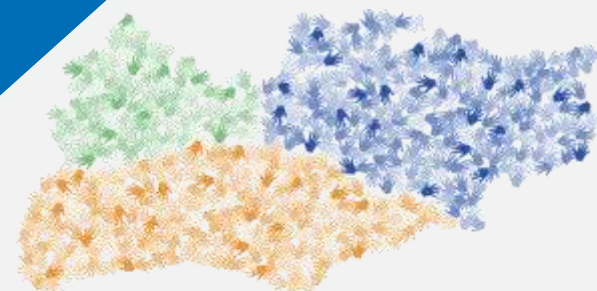
Transition and Innovations in Learning Disability Practice



#LDCoP16

Launch Conference 2016

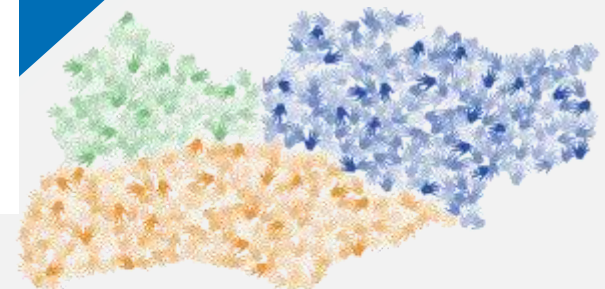
LET OFF



Kent, Surrey & Sussex
Learning Disability
Community of Practice

learningdisabilitycop@gmail.com

Housekeeping



Kent, Surrey & Sussex
Learning Disability
Community of Practice

Introduction

The journey so far

Kent & Medway
Learning Disability
Community of Practice 

2013 Kent and Medway Learning Disability Community of Practice was setup by local people who care about people with learning disabilities experiencing good health and wellbeing, and good health services. The overarching aims from the community of practice were also stated outlined; for the Community of Practice to work towards the eradication of health inequalities by supporting carers, care workers and all professionals to:-

- be person centred
- provide the best quality care and support
- improve equality and access

A web blog was initiated along with a twitter account to help with the sharing of information and networking of like minded individuals:

Web blog : kentlivelwell.wordpress.com

Twitter: twitter.com/kandmldoop



June 2014 Saw a wonderfully diverse group of people coming together at conference to address a wide range of themes relating to health inequalities and learning disability. The keynote was given by Professor Ruth Northway her presentation along with details of all other speakers and evaluation can be found at:

<https://kentlivelwell.wordpress.com/conferences/addressing-health-inequalities-in-learning-disability-week-2014/>

Oct-Dec 2015 During October 2015 member of the CoP met to review the original purpose and develop a shared vision on the way forward. Following a review of a group activity that took place during the meeting and a brief online survey the decision was taken to develop the community of practice in a number of key areas:

- To establish a standard operating procedure for the sharing of information in a more accessible and engaging way
- To develop a guest blog so that member of the community can share there work
- To maintain the original aims, to outline objective for future development
- To host a workforce provider stakeholder group and produce annual feed back to Health Education England in Kent, Surrey and Sussex

2013

2014

2015

2016

June 2013 An event including 60 local people identified what the Community of Practice was for. A detailed report and less wordy version are available to download by clicking on the below images:



<https://kentlivelwell.wordpress.com/about/>

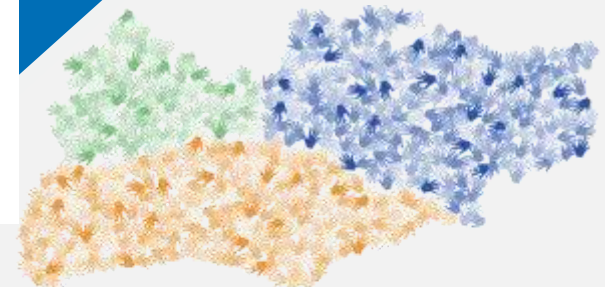


June 2015 The 3rd conference of the Community of Practice took place with the overarching theme of making reasonable adjustments under the Equality Act 2010. The very insightful keynote was give by Professor Chris Hatton, his presentation along with a YouTube video can be accessed for all the speakers at:

<https://kentlivelwell.wordpress.com/conferences/making-reasonable-adjustments-conference-17th-june-2015/>

2016

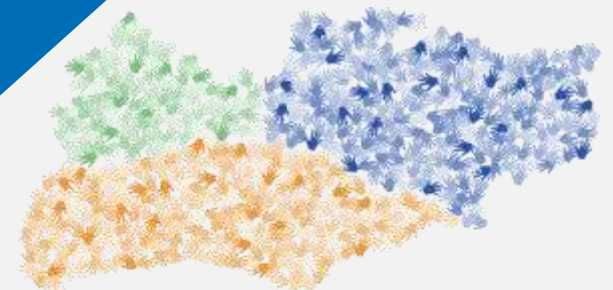
- To launch the first Kent, Surrey & Sussex LD CoP at conference during learning disability week
- To pilot hosting a Learning Disability stakeholder provider meeting that will report back to Health Education England's local office for the Kent, Surrey and Sussex area on workforce needs in the area.



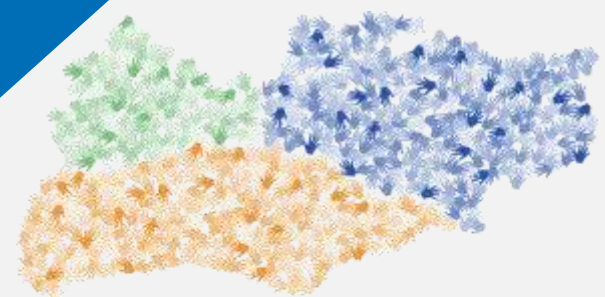
Kent, Surrey & Sussex
Learning Disability
Community of Practice

Today's activities

- Presentations
- Posters Competition
- Social Media Competition
- Market stall
- Service Providers meeting
- Meeting new people



Kent, Surrey & Sussex
Learning Disability
Community of Practice



Kent, Surrey & Sussex
Learning Disability
Community *of* Practice